



Lehenaghmore Road Improvement Scheme

Update: 25th Feb 2026

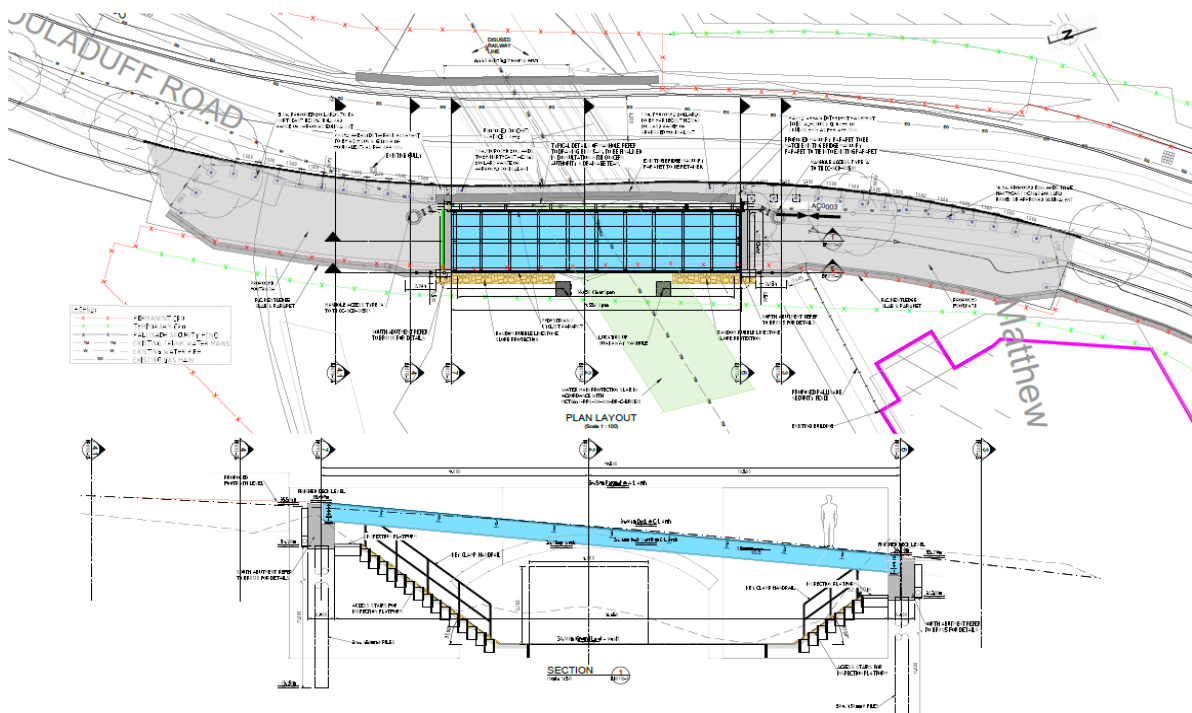
Notification of Upcoming Footbridge Installation on the Pouladuff Road

Proposed Road Closure for Footbridge Installation

From 22.00hrs on Tuesday 31st March 2026

to 06.00hrs on Wednesday 1st April 2026

I am contacting you on behalf of Glas Civil Engineering who are carrying out the Lehenaghmore Road Improvement Scheme on behalf of Cork City Council. A significant part of this scheme involves the installation of a footpath and a cycle path along the full length of the Pouladuff Road, on the Left-Hand Side travelling uphill. This involves the provision of a new steel footbridge of 19.5m span on the eastern side of the former railway bridge. The piled foundations for the bridge abutments have recently been installed, and the construction of the 2 no. bridge abutments will commence shortly.

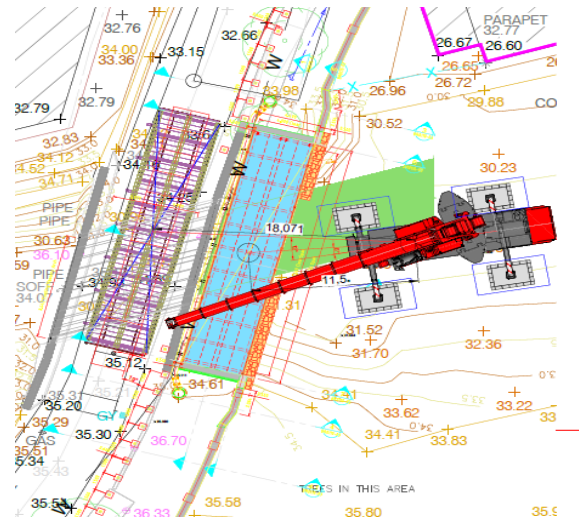


We are currently in the process of engaging with Cork City Council regarding an overnight Road Closure Application of a 500m long section of the Pouladuff Road to facilitate the installation of this bridge deck.





The footbridge itself is being manufactured and installed by Thompson Project Management Ltd of Carlow and will involve a 230T mobile crane, which will sit offline in the former railway cutting as per the snip below, to place this footbridge weighing 34 tonnes. The footbridge will be brought to site on an artic trailer and will pull up on to the existing former railway bridge on the Pouladuff Road. The crane will then lift the footbridge off the artic trailer and lower it into its final offline position. We anticipate that this will be a relatively quick operation, given the mobile crane will have been setup and ready to lift in advance of the footbridge arriving on site. We have applied to Cork City Council for an overnight road closure of the Pouladuff Road from the Forge Hill Junction up to Manor Farm estate entrance. We will have diversion routes signposted and traffic marshals in place to manage the flow of traffic during this operation.



It is proposed, weather permitting especially with respect to wind speeds, to carry out the **installation of this footbridge between 22.00hrs on Tuesday the 31st of March 2026 and 06.00hrs on Wednesday the 1st of April 2026, with the Pouladuff Road closed for this duration.** Our road closure application has allowed for the closure to happen on subsequent nights at the same times, if the weather conditions deem it is not safe to proceed with the bridge lift. We have picked these dates/times given that they are during the school Easter holidays and are during off-peak traffic flows in the area. We will provide further confirmation notice of the date of the Road Closure both a week and a day ahead, via further updates and our VMS message boards. We would like to apologise for any inconvenience caused, and to assure you that this task will be completed with as little delay as possible.

Glas Civil Engineering Ltd.

Peter O'Donoghue Liaison Officer

086-1911162

podonoghue@glascel.ie

